

Wheel Features

Tread Material:	PU	Core Material:	Cast Iron
Bearing:	Ball Bearing	Tread Hardness:	95A±3
Temperature:	-25°C~60°C	Running Speed:	4km/h

Note: Use beyond temperature range or beyond the recommended speed may shorten product life or even damage the product.



- ✔ 2 precision ball bearings,flexible rotation
- ✔ Polyurethane on casting iron core,high load capacity,wear resistance,oil resistance
- ✔ Environmental protection,quiet,effectively protect the floor
- ✔ With iron covers,thread-proof design
- ✔ Painted,anti-rust and anti-corrosion
- ⚠ High temperature and humidity may shortened service life

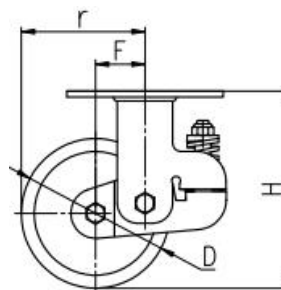
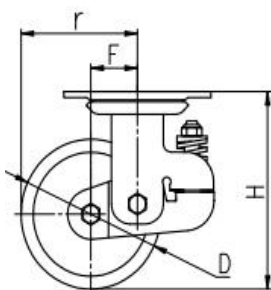


Rolling resistance	■ ■ ■ ■ □	Very good
Wear resistance	■ ■ ■ ■ ■	Excellent
Operating noise	■ ■ ■ ■ □	Very good
Floor surface preservation	■ ■ ■ ■ □	Very good

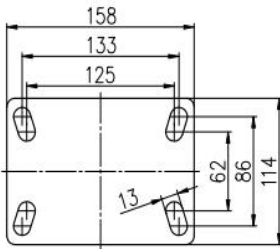
Bracket Features




- ✔ ON/OFF pedals,stable braking effect,easy to operate
- ✔ Steel plate pressed and fully welded,firm and strong
- ✔ Dustproof ring effectively protects grease for long sevice life
- ✔ Good damping performance,effective buffer,ensure balance and stability
- ✔ Galvanized,salt spray test over 72 hours
- ⚠ Wheel brake only,without direction lock function

Parameter (mm)							
Wheel Size	Capacity	Wheel Dia.	Wheel Width	Total Height	Offset	Swivel Radius	Swivel Radius
5"	360 kg	125	48	185	50	112.5	175
6"	440 kg	150	50	197	50	125	183
8"	550 kg	200	50	247	63	163	190



Mounting Drawing

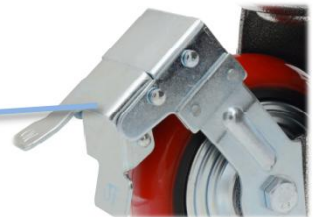


Product ID			
Product Images			
Wheel Size	Plate swivel	Plate fixed	Plate swivel brake
5"	45C31-0129	45C32-0129	45C33-0129
6"	45C34-0130	45C35-0130	45C36-0130
8"	45C37-0131	45C38-0131	45C39-0131

Product Details



ON/OFF brake is easy to operate.



Single spring shock absorption can effectively buffer and ensure balance and stability.

The support is double-welded, solid and robust. Dust ring protection can effectively dust and protect grease lubrication.



Iron cover is beautiful and anti-winding.

