

Wheel Features

Tread Material:	PU	Core Material:	Cast Iron
Bearing:	Ball/Tapered Bearing	Tread Hardness:	95A±3
Temperature:	-25°C~60°C	Running Speed:	4km/h

Note: Use beyond temperature range or beyond the recommended speed may shorten product life or even damage the product.




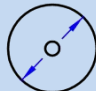
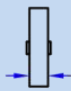

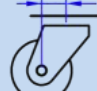

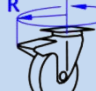
- ✔ Precision conical bearing, high load bearing, flexible rotation
- ✔ Polyurethane on casting iron core, high load capacity, water resistance, low temperature endurable
- ✔ Environmental protection, quiet, effectively protect the floor
- ✔ Painted, anti-rust and anti-corrosion
- ⚠ Not oil-proof, oils may accelerate aging of the wheel

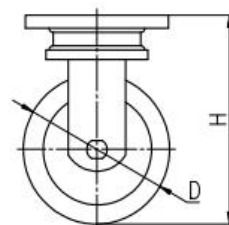
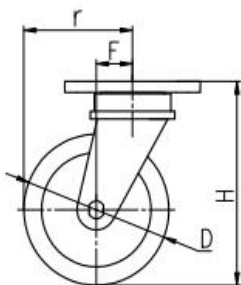


Rolling resistance	■ ■ ■ □ □	Good
Wear resistance	■ ■ ■ ■ ■	Excellent
Operating noise	■ ■ ■ ■ □	Very good
Floor surface preservation	■ ■ ■ ■ □	Very good

Bracket Features

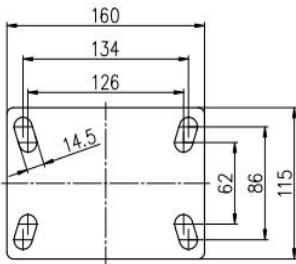
- ✔ Easy to operate, convenient to release the brake
- ✔ Plane bearing, high load capacity, impact resistance and flexible steering
- ✔ Radial conical bearing, high load capacity and impact resistance
- ✔ Single-piece forged base, fully welded, impact resistance and high load capacity
- ✔ Thickened top plate, resistant to compress. Thickened bracket wings, improved load performance.
- ✔ Powder spray treatment, superior anti-rust and anti-corrosion performance, salt spray test over 72 hours

Parameter (mm)							
Wheel Size	Capacity	Wheel Dia.	Wheel Width	Total Height	Offset	Swivel Radius	Swivel Radius
6"	1800 kg	150	64	205	60	135	270
8"	2200 kg	200	64	255	60	160	270
10"	3000 kg	250	80	350	75	200	298
12"	3500 kg	300	80	405	75	225	/

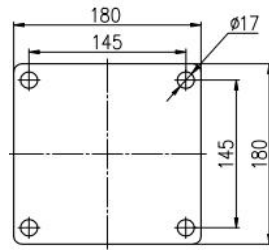


[English]

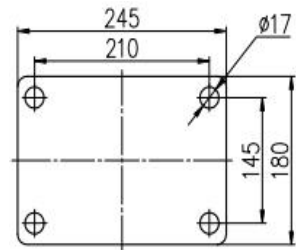
Mounting Drawing



6"-8"Plate Swivel/Brake/Fixed



10"-12"Plate Swivel/Brake



10"-12"Plate Fixed

Product ID

Product Images



Wheel Size

Plate swivel

Plate fixed

Plate swivel  
brake

6"

40B01-1160

40B02-1160

40B22-1160

8"

40B03-1161

40B04-1161

40B23-1161

10"

40B05-1162

40B06-1162

40B24-1162

12"

40B19-1163

40B20-1163

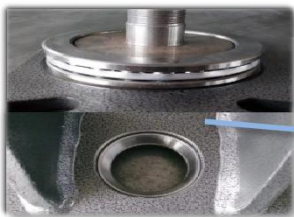
/

Product Details

The plate and the base are integrally forged and formed.



The swivel structure is assembly by plain bearing and tapered bearing, with high loading capacity and impact resistance, and flexible.



The brake pedal is convenient to operate and the brake tension can be adjusted.



Powder surface treatment looks nice, more environmental protection and good anti-corrosion performance.

