

40A 系列 MC Nylon (White)



Wheel Features

Tread Material:	MC Nylon	Core Material:	Nylon
Bearing:	Ball Bearing	Tread Hardness:	75D±3
Temperature:	-30°C~90°C	Running Speed:	4km/h

Note: Use beyond temperature range or beyond the recommended speed may shorten product life or even damage the product.

- ✔ Precision conical bearing, high load bearing, flexible rotation
- ✔ Injection nylon, high load capacity, high wear resistance
- ✔ No deformation, anti-aging, endurable to humid environment
- ⚠ Hard wheel material, it may damage epoxy flooring
- ⚠ Wheel running may cause some noise

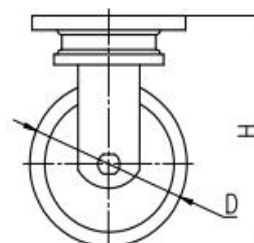
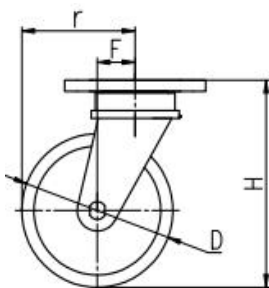


Rolling resistance	■ ■ ■ ■ □	Very good
Wear resistance	■ ■ ■ ■ ■	Excellent
Operating noise	■ ■ □ □ □	Acceptable
Floor surface preservation	■ ■ □ □ □	Acceptable

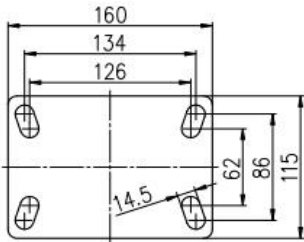
Bracket Features

- ✔ Easy to operate, convenient to release the brake
- ✔ Plane bearing, high load capacity, impact resistance and flexible steering
- ✔ Radial conical bearing, high load capacity and impact resistance
- ✔ Single-piece forged base, fully welded, impact resistance and high load capacity
- ✔ Thickened top plate, resistant to compress. Thickened bracket wings, improved load performance.
- ✔ Powder spray treatment, superior anti-rust and anti-corrosion performance, salt spray test over 72 hours

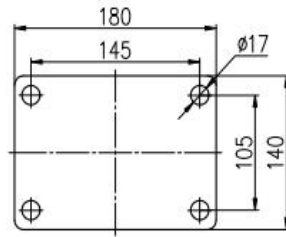
Parameter (mm)							
Wheel Size	Capacity	Wheel Dia.	Wheel Width	Total Height	Offset	Swivel Radius	Swivel Radius
6"	2500 kg	150	64	205	60	135	270
8"	3000 kg	200	64	255	60	160	270
10"	4000 kg	250	80	310	75	200	298
12"	5000 kg	300	80	360	75	225	







Mounting Drawing



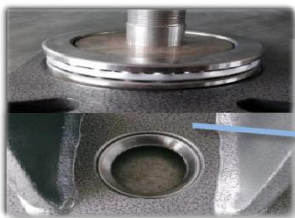
6"-8"Plate Swivel/Brake/Fixed



10"-12"Plate Swivel/Brake/Fixed

Product ID				
Product Images				
Wheel Size	Plate swivel	Plate fixed	Plate swivel brake	Plate swivel brake
4"	40A01-1688	40A02-1688	40A13-1688	40A27-1688
5"	40A03-1689	40A04-1689	40A14-1689	40A28-1689
6"	40A05-1690	40A06-1690	40A15-1690	40A29-1690
8"	40A19-1681	40A20-1681	40A21-1681	/

Product Details



The plate and the base are integrally forged and formed.



The steering structure adopts plane pressure bearing and conical bearing, with high load bearing and impact resistance, and flexible steering.

The brake pedal is convenient to operate and the brake tension can be adjusted.



Pressured injection molding MC nylon has the characteristics of high loading capacity, aging resistance and water resistance.

[English]

