

Wheel Features

Tread Material:	High Strength PP	Core Material:	High Strength PP
Bearing:	Ball Bearing	Tread Hardness:	75D±3
Temperature:	-25°C~80°C	Running Speed:	4km/h

Note: Use beyond temperature range or beyond the recommended speed may shorten product life or even damage the product.







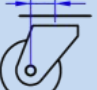

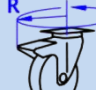
- ✔ 2 precision ball bearings, flexible rotation
- ✔ Enhanced injection polypropylene, high load capacity, low starting force, economical choice
- ✔ No deformation, anti-aging, endurable to humid environment
- ⚠ Hard wheel material, it may damage epoxy flooring
- ⚠ Wheel running may cause some noise

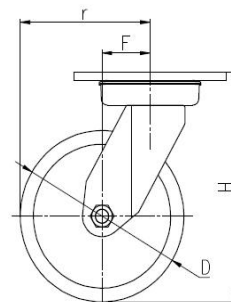
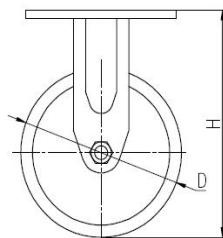
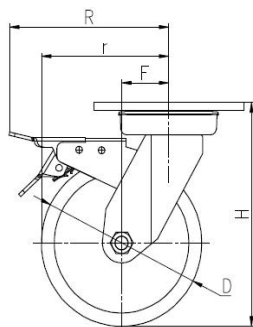


Rolling resistance	■ ■ ■ ■ ■	Excellent
Wear resistance	■ ■ ■ □ □	Good
Operating noise	■ □ □ □ □	Acceptable
Floor surface preservation	■ □ □ □ □	Acceptable

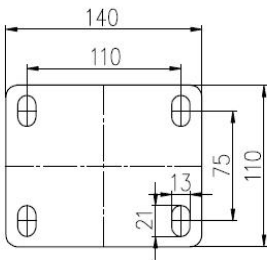
Bracket Features

- ✔ Steel plate pressed and fully welded, firm and strong
- ✔ Thickened top plate, resistant to compress which is hard to deform
- ✔ Plane bearing, high load capacity, impact resistance and flexible steering
- ✔ Blue galvanized, ROHS/REACH passed, salt spray test over 72 hours
- ✔ ON/OFF pedals, stable braking effect, easy to operate
- ✔ Brake part is replaceable, convenient to maintain

Parameter (mm)	 Capacity	 Wheel Dia.	 Wheel Width	 Total Height	 Offset	 Swivel Radius	 Swivel Radius
5"	500 kg	125	50	176	38	101	151
6"	600 kg	150	50	201	44	119	154
8"	700 kg	200	50	252	54	154	173



Mounting Drawing

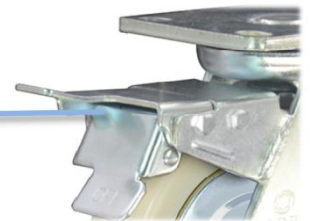


Product ID			
Product Images			
Wheel Size	Plate swivel	Plate fixed	Plate swivel brake
5"	36A04-1394	36A06-1394	36A05-1394
6"	36A07-1395	36A09-1395	36A08-1395
8"	36A10-1396	36A12-1396	36A11-1396

Product Details



ON/OFF brake is easy to operate. Brake components can be replaced with screw connecting.



Planar bearings can match high loading capacity, impact resistance and flexible in rotation.

Double-sides welding, firm and strong. The top plate is thickened by 7.5mm.



Iron cover is nice appearance and anti-winding.

