

Wheel Features

Tread Material:	Nylon	Core Material:	Cast Aluminum
Bearing:	Annular Ball Bearing	Tread Hardness:	75D±3
Temperature:	-30°C~90°C	Running Speed:	4km/h

Note: Use beyond temperature range or beyond the recommended speed may shorten product life or even damage the product.





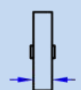

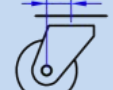

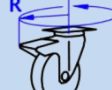
- ✔ Integral bearing, high concentricity
- ✔ Casting nylon material, high load capacity, low starting force
- ✔ No deformation, anti-aging, durable to humid environment
- ⚠ Wheel running may cause some noise

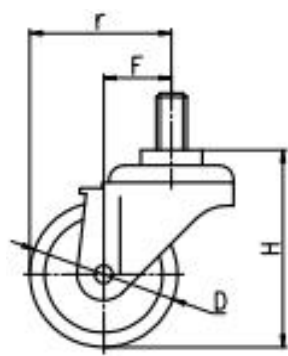
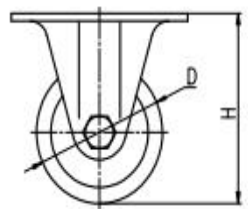
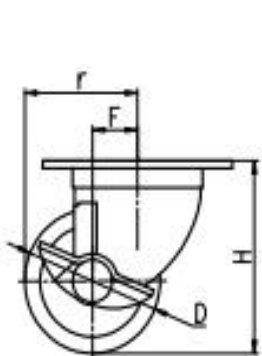


Rolling resistance	■■■■■	Excellent
Wear resistance	■■■■■	Excellent
Operating noise	■□□□	Acceptable
Floor surface preservation	■□□□	Acceptable

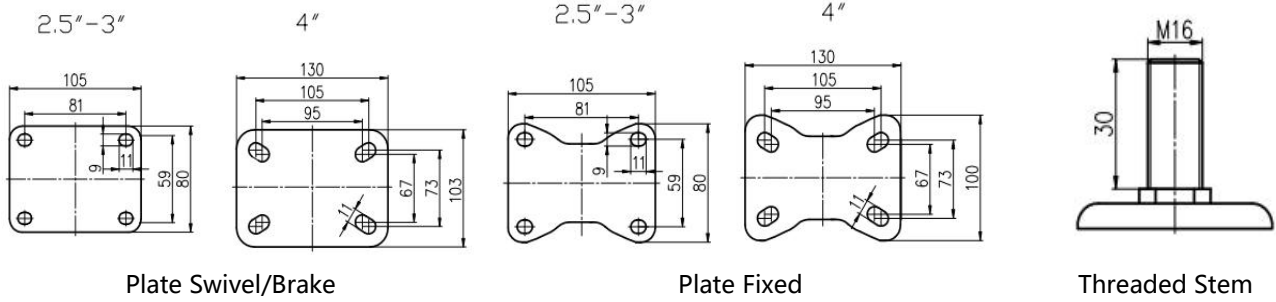
Bracket Features

- ✔ Side brake, easy to operate
- ✔ Bracket made of pressed steel plate, firm and strong
- ✔ Reinforced riveted, close gap, high structural strength
- ✔ Electrophoretic treatment, salt spray test over 72 hours
- ⚠ This brake is a little hard to operate, for the most solid braking effect
- ⚠ Wheel brake only, without direction lock function

Parameter (mm)							
Wheel Size	Capacity	Wheel Dia.	Wheel Width	Total Height	Offset	Swivel Radius	Swivel Radius
2.5"	300 kg	65	46	90	30	62.5	78
3"	350 kg	75	46	108	30	67.5	78
4"	450 kg	100	48	148	40	90	90

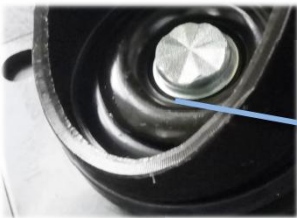


Mounting Drawing

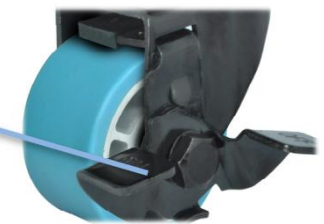


Product ID					
Product Images					
Wheel Size	Plate swivel	Plate fixed	Plate swivel brake	Threaded stem	Threaded stem brake
2.5"	30B01-1089	30B03-1089	30B02-1089	30B04-1089	30B05-1089
3"	30B06-1090	30B08-1090	30B07-1090	30B09-1090	30B10-1090
4"	30B16-1092	30B18-1092	30B17-1092	30B19-1092	30B20-1092

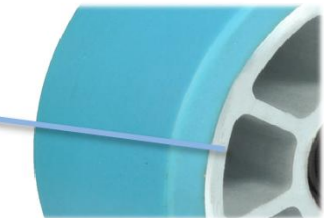
Product Details



The side brake is easy to operate and large operating space. The brake pads are covered with rubber, and won't damage the wheel surface.



Fancy riveting has tight clearance. Double ball retainer structure is flexible in rotation. Dust ring can effectively protect dust and grease lubrication.



Aluminum wheel hub looks nice, lightweight and high strength.

Annular ball bearings have high concentricity and free maintenance.

